



Field & Technical Services, LLC

200 Third Avenue
Carnegie, PA 15106
412-429-2694
www.f-ts.com

| | | | |
|-------|-------------------|-------|---------|
| 20514 | 6/4/2008 15:16:09 | 0.032 | 0.88576 |
| 20515 | 6/4/2008 15:46:09 | 0.032 | 0.88576 |
| 20516 | 6/4/2008 16:16:09 | 0.032 | 0.88576 |
| 20517 | 6/4/2008 16:46:09 | 0.033 | 0.91344 |
| 20518 | 6/4/2008 17:16:09 | 0.033 | 0.91344 |
| 20519 | 6/4/2008 17:46:09 | 0.033 | 0.91344 |
| 20520 | 6/4/2008 18:16:09 | 0.033 | 0.91344 |
| 20521 | 6/4/2008 18:46:09 | 0.033 | 0.91344 |
| 20522 | 6/4/2008 19:16:09 | 0.033 | 0.91344 |
| 20523 | 6/4/2008 19:46:09 | 0.034 | 0.94112 |
| 20524 | 6/4/2008 20:16:09 | 0.034 | 0.94112 |
| 20525 | 6/4/2008 20:46:09 | 0.033 | 0.91344 |
| 20526 | 6/4/2008 21:16:09 | 0.034 | 0.94112 |
| 20527 | 6/4/2008 21:46:09 | 0.034 | 0.94112 |
| 20528 | 6/4/2008 22:16:09 | 0.034 | 0.94112 |
| 20529 | 6/4/2008 22:46:09 | 0.034 | 0.94112 |
| 20530 | 6/4/2008 23:16:09 | 0.034 | 0.94112 |
| 20531 | 6/4/2008 23:46:09 | 0.034 | 0.94112 |
| 20532 | 6/5/2008 0:16:09 | 0.034 | 0.94112 |
| 20533 | 6/5/2008 0:46:09 | 0.034 | 0.94112 |

| Advanced Calibration Data | | Cal Date | |
|---------------------------|------------------|-----------------|------------------|
| | Block 0 | 7/10/2007 13:37 | |
| | Block 1 | unknown | |
| Field Calibration Data | | m | |
| | Pressure | 1 | |
| | Temperature | 1 | |
| SensorSN | 2728001 | | |
| Sensor Type | PT2X | | |
| Sensor Name | INW Smart Sensor | | |
| Session Name | Secondary Sump | | |
| # Records | 4337 | | |
| Statistical Data | | Pressure(psi) | |
| | Sensor Range | 30 psig | |
| | Minimum | -0.002 | |
| | Maximum | 0.154 | |
| | Mean | 0.0366 | |
| | Variance | 0.0018 | |
| | Std Deviation | 0.0428 | |
| Rec # | Date/Time | Pressure(psi) | Pressure (inH2O) |
| 20484 | 6/4/2008 0:16:52 | 0.029 | 0.80272 |
| 20485 | 6/4/2008 0:46:52 | 0.029 | 0.80272 |
| 20486 | 6/4/2008 1:16:52 | 0.029 | 0.80272 |
| 20487 | 6/4/2008 1:46:52 | 0.029 | 0.80272 |
| 20488 | 6/4/2008 2:16:52 | 0.03 | 0.8304 |
| 20489 | 6/4/2008 2:46:52 | 0.03 | 0.8304 |

Data Management & Reporting

FTS will create, maintain, and update your electronic database.

Data managers expertly format data to suit your reporting needs and are adept at statistical evaluations and graphical presentations utilizing programs which include GISKey and EQuIS. FTS optimizes the data management process by electronically collecting field data, rapidly transferring data from the field to the office, managing laboratory analytical turnaround, and maintaining a comprehensive electronic database. This allows for time to be better allocated to data analysis and review resulting in on time deliverables that address regulatory drivers specific to each job and ultimately assure that overall project compliance goals are achieved.

Data Management

Data collection is the primary objective of many environmental projects as part of site investigation, site remediation, waste management, and/or long-term

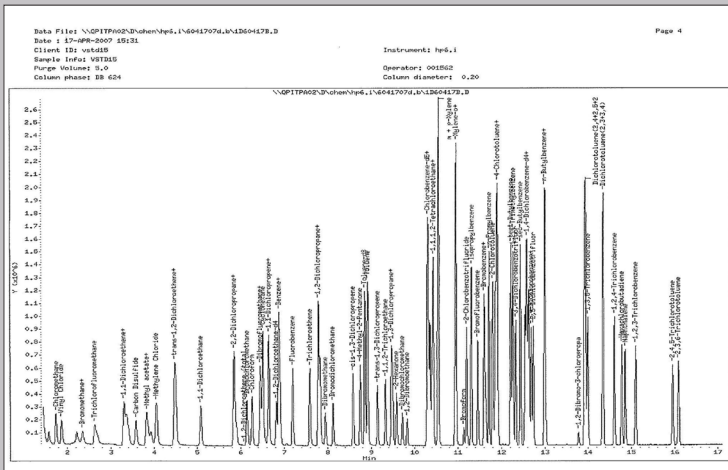
monitoring. The volume of data is typically extensive and complex in that it requires electronic database management. Every piece of data has a cost associated with it, and maintaining an up-to-date and complete database is a priority.

It is also imperative that data is appropriately presented in reports, clearly showing results so that our clients and the regulators can quickly and easily understand site conditions. FTS data managers are adept at statistical evaluations and graphical presentations. FTS performs data validation according to the National Functional Guidelines as well as state-specific guidelines. Data qualifiers are assigned to indicate the usability of the data.

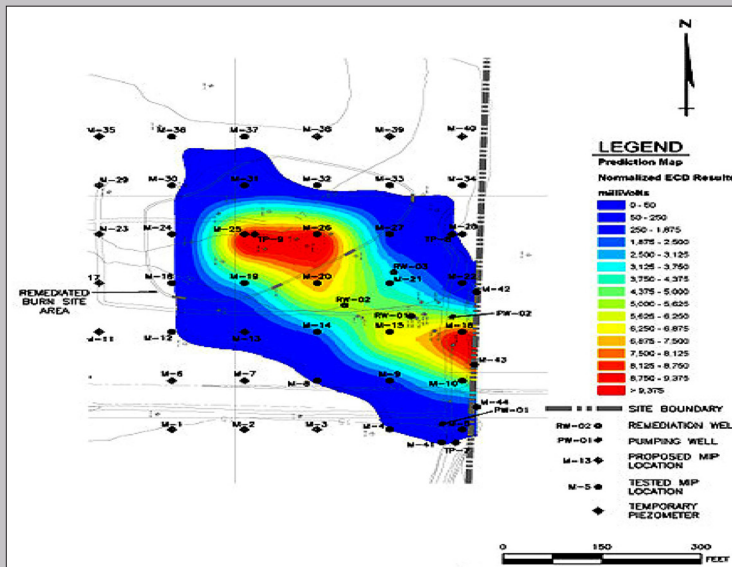
Standard databases currently used by FTS include GISKey, Environmental Quality Information System (EQuIS) and Access.

- GISKey is a comprehensive, environmental data management and reporting software suite that

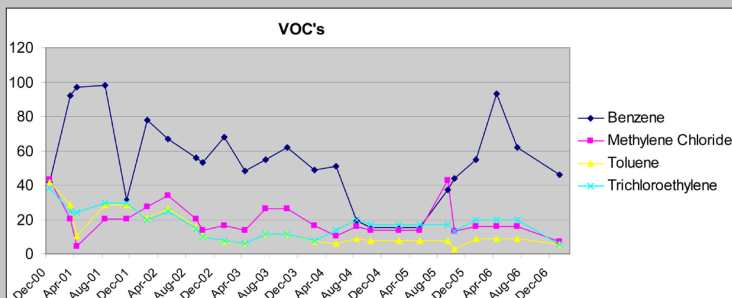
FTS Services



Chromatogram Analysis During QA



GIS Interpretation



Trend Analysis Over Time

includes modules for storing and presenting chemistry, geology, hydrology, NPDES, and other data. It also has a statistics package that can interface with other software.

- EQiS is a database system that also manages chemistry and geology data for environmental projects. The geology package is a comprehensive database for manipulating lithology, downhole point data, geologic samples, and much more. The chemistry package supports traditional analytical data and all QA/QC information. EQiS also interfaces with ArcView as well as our custom electronic field data collection system.

Reporting

FTS provides a systematic approach to reporting premised on prompt scheduling of data collection, immediate data evaluation, use of State-of-the-Art technology and expert review and management. Elements of your report are assigned to personnel with the required knowledge to complete the task efficiently. Cohesive interaction between the data collection and reporting teams keeps monitoring and reporting on schedule.

Examples of current reporting programs include:

- RCRA Post-Closure Care Permit Reporting
- Operations & Maintenance Reporting
- Discharge Monitoring Reports (DMRs) related to NPDES and POTW permit requirements

Field & Technical Services, LLC
 200 Third Avenue
 Carnegie, PA 15106
 412-429-2694
 www.f-ts.com

